

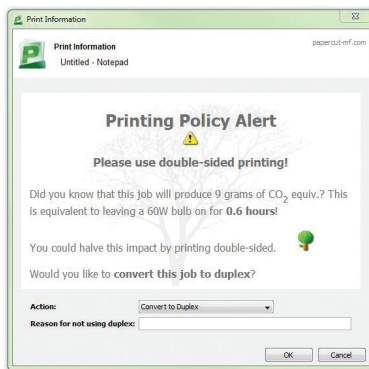


COMMERCIAL QUICK FLYER

Report Use - Reduce Cost - Secure Print Manage Print, Copy, Scan and Fax

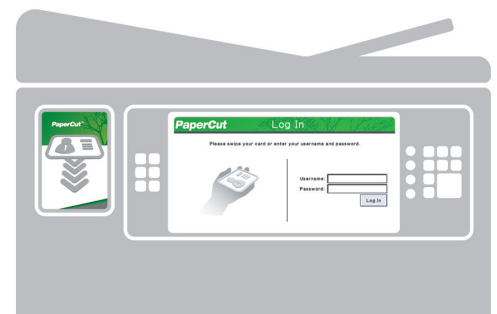
Intuitive and Easy to Use

PaperCut MF is regarded as the simplest system of its type to deploy and manage. System administrators have full access to administration and configuration via a familiar web interface.









It offers:

- User directory (eg. Active Directory and others) integration and automatic user account creation
- Secure print release and Find-Me printing
- Administrator dashboard with real-time status updates
- Web Print: Driverless printing for wireless devices
- Optional client and account billing
- Ability to encourage responsible use via popup notifications



Benefits of PaperCut

-  **Control cost**
-  **Manage copiers**
-  **Report usage**
-  **Access devices**
-  **Responsible Usage**
-  **Secure documents**

Powerful Job Scripting

Advanced scripting can be used to define and finely tune your printing policy and support your organization in eliminating waste and changing user behavior.



See environmental impact at a glance with the Paper-Less Alliance widget

With PaperCut you can:

- Automatically route large jobs to detected high volume printers
- Discourage printing of emails via popup print policy warnings
- Encourage double sided printing
- Discourage or disable color printing by user group
- Least cost routing (suggest more cost effective devices based on conditions)
- Allow free printing (e.g. during class times)
- Define action by job attribute, user / group, period of day, device feature / type

Secure Print Release

PaperCut's Find-Me printing feature enables users to print to a global virtual queue. Jobs are paused and only printed when the user releases the job at any compatible MFD/prINTER:

- Improved document security and convenience.
- Reduce IT administrators needed to manage multiple print drivers and queues for both workstations and notebooks.
- Find-Me printing minimizes waste and has been shown to reduce printing output by up to 20% in busy office environments.
- Support for multiple release methods ranging from auto release on authentication to active release job-by-job.

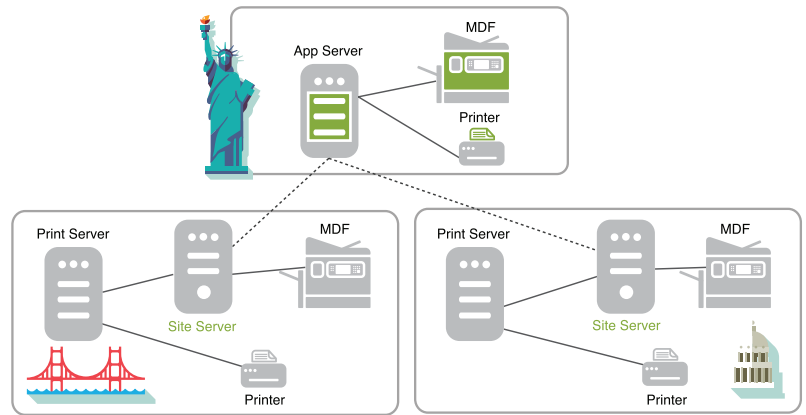


End users can view and manage held print jobs at the MFD

Site Server Module

The Site Server gives the risk averse customer peace of mind that access to printing resources is still available during unexpected network dropouts. Maintain critical services of MFD access and Printing during an outage.

- High availability printing and copying
- Transactions are recorded



Technical Specifications

Scalability:

- 5 to 500,000+ users

Architecture

- Single server or multi-server environments
- Monitor locally attached printers
- Client software is optional
- 32-bit and 64-bit native

Supported Server Operating Systems:

- Microsoft Windows Server (any edition including 64-bit and server core)
- Mac OS X Server (10.4 or higher)
- Linux (any modern distribution)
- Novell OES Linux and iPrint

User Directory:

- Active Directory (native integration including nested groups and OU's)
- OpenDirectory
- eDirectory
- LDAP
- NIS, PAM, Samba, and others

Encryption:

- SSL encryption used for sensitive client server communication.

Supported Failover

- Microsoft Failover Server
- Microsoft Cluster Server
- Veritas Cluster Server
- Linux HA and Novell Cluster

Supported Workstation Operating Systems:

- Microsoft Windows (any edition)
- Mac OS X (10.4 or higher)
- Linux (any modern distribution)
- Unix Workstation (Java required to run client software)

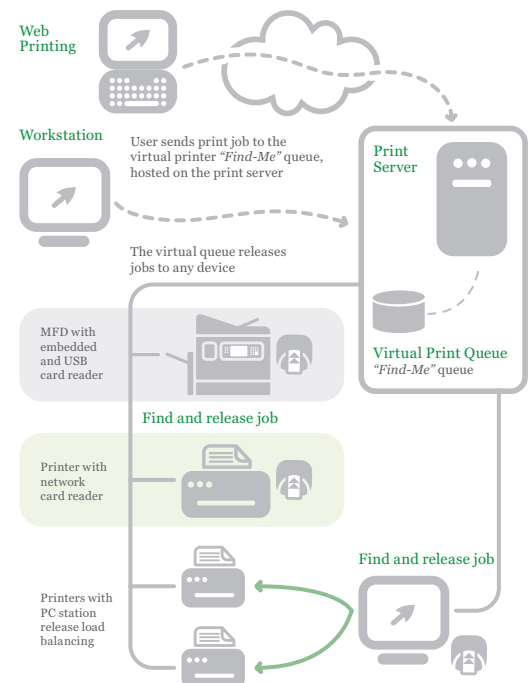
Database Servers:

- Self managing internal database: suitable for up to 5,000 end users
- Microsoft SQL Server 2000/2005/2008/2012/2014 (either 32 or 64 bit)
- Microsoft SQL Express 2005/2008/2012/2014 (free from Microsoft)
- PostgreSQL 7.1 or higher
- MySQL 5.0 or higher
- Oracle 9.2 or higher

Licensing:

- Unlimited printers, servers and workstations.

Find Me Printing



A global print queue provides convenience for end users and helps keep documents secure